



St Matthew's Anglican Church on Montvue Avenue, next to the provincial building was built in 1900 on property donated by Mr and Mrs Milsted. It is the oldest church in the district and was opened on October 28, 1900 by Archdeacon Edwyn S W Pentreath. The church was initially built to seat 100 people, but it was later increased to 180 seats. In September 1903 the Rev J W Weatherdon, vicar of the Parish of All Saints, Mission, commenced fortnightly services in Abbotsford. He walked from Mission to Abbotsford and back. Weekly services were started in 1906, ministers taking turns to conduct services. Rev A E Davies, who came in 1908, was the first resident clergyman. First marriage performed was that of Edgar Marcey and Georgia Tucker on November 12, 1908 and first confirmation on August 15, 1909 included children of Mr and Mrs Fraser York and Mrs F Fooks. Present vicar, Rev Norman Calland came to Abbotsford in September 1951 from St Andrew's Parish, Spirit River, which is in the Alberta Peace River district.

(Photo and explanation from the archives of The Reach, Abbotsford #19550)

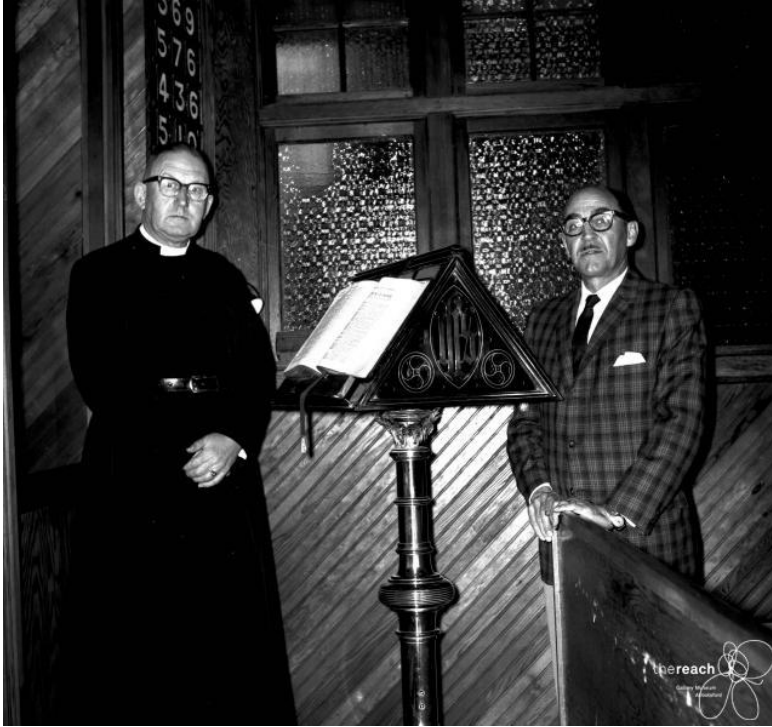


*The Reach Photo Archives 19549*



*The Reach Photo Archives 13672*

St. Matthews Church altar and lectern. "One of the oldest altars in British Columbia is that in St. Matthew's Anglican church which attained status of self-supporting parish Monday. Altar was originally in old St. James church, Vancouver, and has centre slab of fine Italian marble inlaid with silver crosses bearing five emblems of the Crucifixion. It was presented to St. Matthew's more than a quarter of a century ago. Rev. Norman Calland, formerly vicar, will be rector of the parish."



*The Reach Photo Archives 13673*

"Lyle W Atkinson has been secretary-treasurer of St. Matthew's church since 1934. He was handling church business when hand-wrought brass lectern from old St James church, Vancouver, was presented to Abbotsford congregation 25 years ago."



*P14767 The Reach PhotoArchives*



*P14766 The Reach PhotoArchive*

*Sister Church*



*P15462 The Reach Photo Archives*

"Interior and exterior views above and below are of the Bradner Anglican Church where congregation will be holding 50th anniversary services Friday." St. Margaret's Anglican Church."



*P15461 The Reach Photo Archives*